



*Advancing full access and inclusion for all*



# Board's Mission

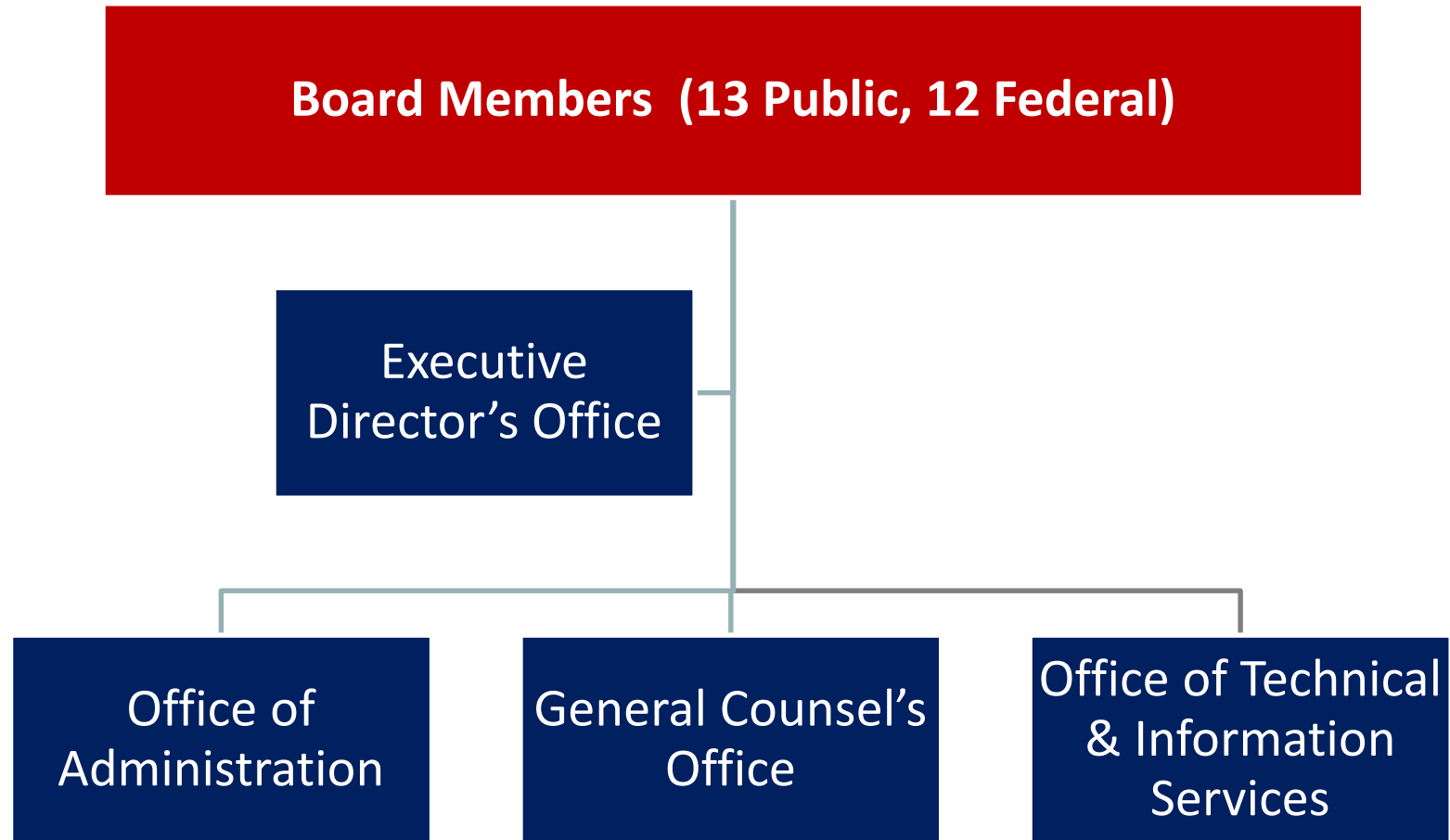
- **Establish access guidelines & standards**
- **Provide technical assistance & training**
- **Enforce ABA standards (federal sector)**



- **Independent federal agency**
- **About 30 staff**
- **Governing Board**
- **Budget: over \$8 million**



# Board Structure





# Laws Concerning the Board

- **Architectural Barriers Act (1968)**
- **Americans with Disabilities Act (1990)**
- **Telecommunications Act (1996)**
- **Rehabilitation Act Amendments – Sec. 508 (1998)**
- **Patient Protection and Affordable Care Act (2010)**



# Buildings & Facilities

**Covered by the ADA (private & state/local gov't sectors) and ABA (federally funded)**



**New construction, alterations, and<sup>6</sup>additions**

# Recreation Facilities



**Facility standards supplemented to cover various recreation facilities (pools, play areas, amusement rides, golf, etc.)**

# Outdoor Areas



**New standards for trails, picnic and camping areas, and beach access routes<sub>8</sub>(ABA)**



# IT and Communication



**Standards for information & communication  
technology in the federal sector**

# Medical Diagnostic Equipment



**Standards for exam tables/chairs, weight scales, radiological & mammography equipment, etc.**



# Passenger Vessels



**New guidelines being developed for ferries, cruise ships, excursion boats, and other vessels**

# Public Rights-of-Way



**New guidelines in development for public streets and sidewalks**




# Transit Systems



**Standards for public transit facilities and buses, vans, rail cars, trams, etc.**


# ADA Accessibility Guidelines (ADAAG) for Transportation Vehicles

**UNITED STATES ACCESS BOARD**  
*Advancing Full Access and Inclusion for All*

☒ Search Transportation  
☐ Search entire site



**The Board** | **Guidelines & Standards** | **Training** | **Enforcement** | **Research**

[Home](#) > [Guidelines and Standards](#) > [Transportation](#)



## Transportation

Access to public transportation is required by the Americans with Disabilities Act (ADA) and other laws. Standards issued under the ADA address access to facilities and to vehicles of public transit systems. The Board is developing new guidelines for passenger vessels under the ADA.






### Transportation Facilities

ADA Accessibility Standards apply to bus stops, rail stations, and airports and other transportation facilities.



### Transportation Vehicles

The Board's ADA Accessibility Guidelines for Transportation Vehicles apply to buses, vans, rail cars, and other modes of public transit and serve as the basis for standards maintained by the U.S. Department of Transportation that apply to new or remanufactured vehicles.



### Passenger Vessels

The Board is developing guidelines under the ADA for access to ferries, cruise ships, excursion boats, and other passenger vessels that will supplement the Board's ADA Accessibility Guidelines for Transportation Vehicles.

#### EMAIL UPDATES

Sign up for updates on Transportation:

#### TECHNICAL ASSISTANCE:

(800) 872-2253  
TTY: (800) 993-2822  
Fax: (202) 272-0081  
[ta@access-board.gov](mailto:ta@access-board.gov)

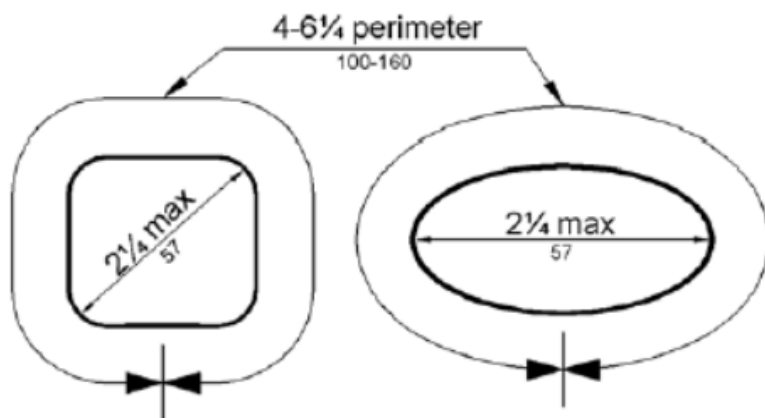


# Non-Rail Vehicles

- *Non-Rail Vehicle:* A self-propelled, rubber-tired vehicle used to provide transportation services and intended for use on city streets, highways, or busways that constitutes either a bus, over-the-road bus, or van.

# Chapter 3: Building Blocks

- Covers basic elements and requirements found in multiple sections
  - T302 Walking surfaces
  - T303 Handrails, stanchions and handholds
  - T304 Operable parts





# Door Opening Width and Height (T502)

- Key for getting in and out of the vehicle
- Vertical Clearance 56 inches minimum
- 32 inch minimum width



# Ramp Requirements

- The slope requirements for ramp deployment:
  - 1:6 max. slope when deployed to curb.
  - 1:6 max. slope when deployed to street.
  - 1:8 max. slope when deployed to a platform.
- Although showing a bus requirement applies to small vehicles



# Lift Requirements (T403)

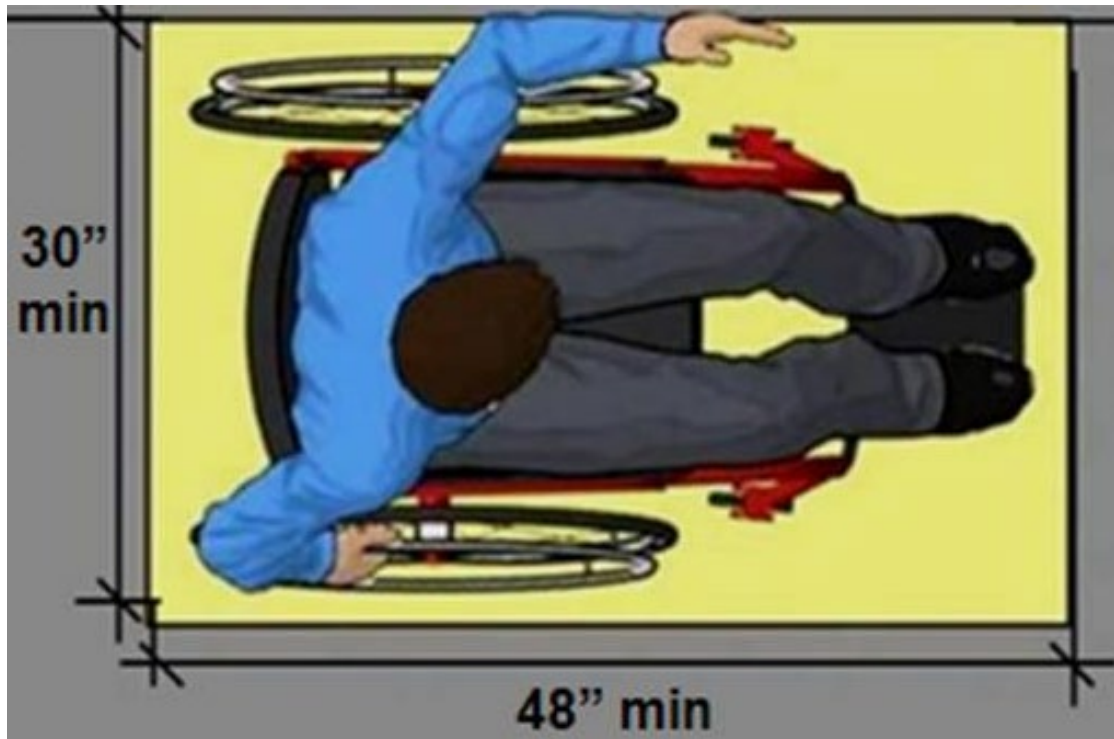
- References Federal Motor Vehicle Safety Standards which address:
  - Design load
  - Controls and manual operation
  - Platform characteristics
  - Threshold ramps
  - Deflection and movement
  - Handrails etc.
- Lift can be entered in either direction.





# Wheelchair Spaces (T210 & T602)

- Small Vehicles Provide at least one space.
- Size is 30 x 48 inches minimum (w/securement)







# Wheelchair Spaces and Securement Systems

- T602 Wheelchair spaces
- T603 Wheelchair securement systems
- T604 Stowage
- T605 Seat belts and shoulder belts



# Wheelchair Spaces(T602)

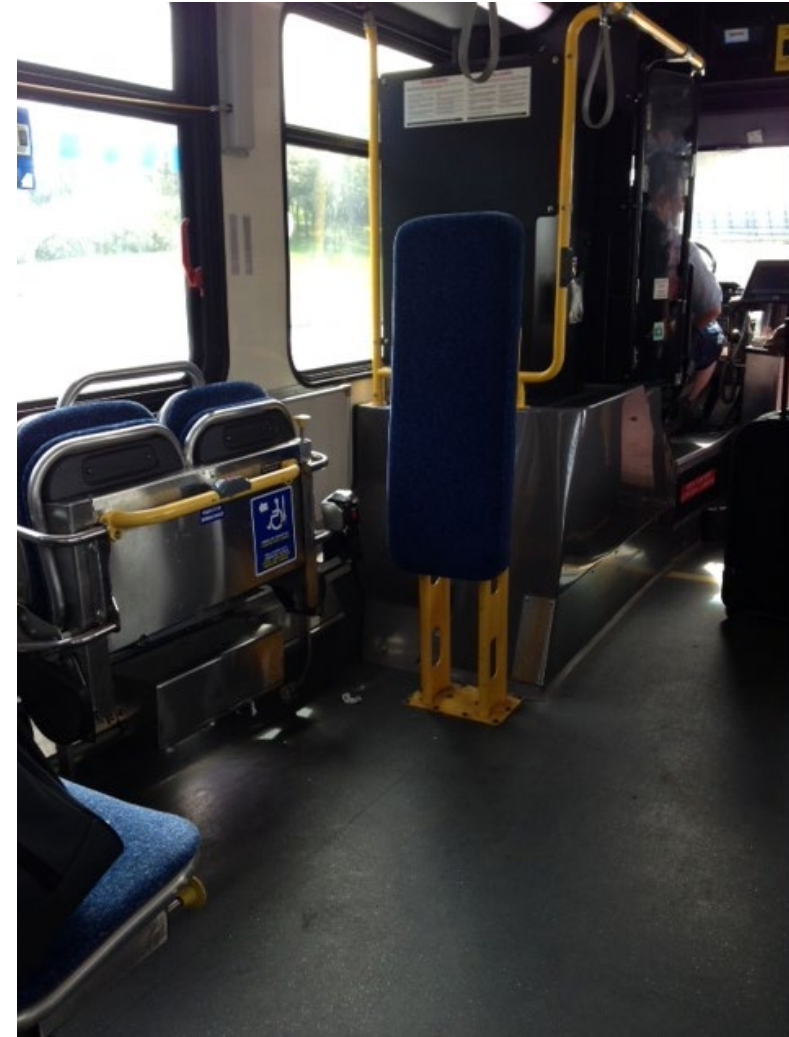
- T602.2 Surfaces.
- T602.3 Approach.
- T602.4 Size. 30 inches (760 mm) minimum in width and 48 inches (1220 mm) minimum in length.





# Wheelchair Securement Systems(T603)

- Allows rear facing securement and references ISO 10865-1:2012(E) Part 1: *Systems for rearward facing wheelchair-seated passengers.*

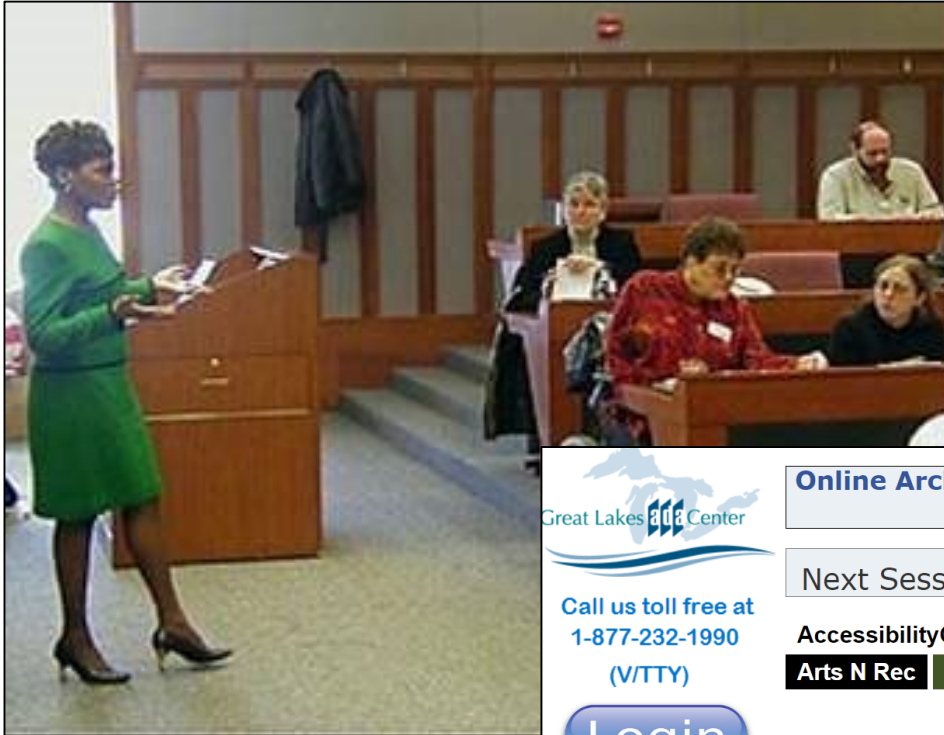



# Technical Assistance





# Training & Webinars





Great Lakes ADA Center

Call us toll free at  
1-877-232-1990  
(V/TTY)

**Login**

## Online Archives

Next Session: Jul 11, 2019 - Accessible Transient Lodging

**AccessibilityOnline** **ADA Audio** **ADA Legal** **Accessible Technology**  
**Arts N Rec** **Section 508** **RESNA**

### ARCHIVED ACCESSIBILITYONLINE WEBINAR SESSIONS

<b>Accessibility Online</b>	<b>About the Access Board</b>
Home	Open Q & A (8/2/2018)
Schedule	Enforcing the Architectural Barriers Act (ABA) (4/7/2011)
Archives	<b>Building and Facilities: ADA and ABA Standards</b>
Speakers	Differences Between the ADA and ABA Accessibility Standards (4/4/2019)
Create an Account	Accessible Entrances, Doors, and Gates (3/7/2019)
Continuing Education	Common Sources of Confusion in the ADA and ABA Standards (12/6/2018)
Accessibility	Accessible Exterior Routes and Surfaces (11/1/2018)
Program Format	Federal Facilities & the Architectural Barriers Act Accessibility Standard (ABA) - "A Refresher" (9/6/2018)
	Open Q & A (3/1/2018)
	Accessible Alterations (A Refresher) (1/4/2018)
	Open Q & A (9/7/2017)

# Guides & Animations

The image displays a collection of resources from the U.S. Access Board, arranged in a collage. On the left is a screenshot of the U.S. Access Board website, featuring the logo and navigation tabs for 'The Board', 'Guidelines & Standards', 'Training', and 'Enforcement'. The website lists various categories such as 'Communications & IT', 'Buildings & Sites', 'Recreation Facilities', 'Streets & Sidewalks', 'Transportation', and 'Health Care'. Below these are 'BOARD NEWS' items, including 'Board Issues Final Guidelines for Federal Outdoor Recreation Sites' and 'The Rehabilitation Act and Creation of the Access Board'. In the center are two technical guides: 'U.S. Access Board Technical Guide Operable Parts' and 'U.S. Access Board Technical Guide Floor and Ground Surfaces'. The 'Operable Parts' guide includes a diagram of a door with a callout for 'Examples of Operable Parts' and a note about 'Provisions for other elements also apply the'. The 'Floor and Ground Surfaces' guide lists specifications for floor and ground surfaces, including 'interior and exterior accessible routes, including walking surfaces, ramps, elevators, and lifts', 'required clearances, including clear floor space, wheelchair seating spaces, turning space, and door maneuvering clearances', and 'accessible parking spaces, access aisles, and accessible passenger loading zones'. It also mentions 'Firmness, Stability, and Slip Resistance (§302.1)' and 'Accessible floor and ground surfaces must be stable and firm'. On the right is a tablet displaying an animation of a person in a wheelchair on a yellow highlighted path, with a video player interface at the bottom.

**UNITED STATES ACCESS BOARD**  
*Advancing Full Access and Inclusion for All*

The Board | Guidelines & Standards | Training | Enforcement

The U.S. Access Board is a federal agency that promotes equality for people with disabilities through leadership in accessible design and the development of accessibility guidelines and standards for the environment, transportation, communication, medical diagnostic equipment, and information technology.

Communications & IT  
Buildings & Sites  
Recreation Facilities  
Streets & Sidewalks  
Transportation  
Health Care

**BOARD NEWS**

- Board Issues Final Guidelines for Federal Outdoor Recreation Sites (September 26)
- The Rehabilitation Act and Creation of the Access Board (September 26)
- Boy Scouts Improve Accessibility at National River Area (August 20)
- Board Extends Comment Period for Proposed Vessel Guidelines

**U.S. ACCESS BOARD TECHNICAL GUIDE**  
**Operable Parts**

Operable Parts Covered (§305)

Compliance is required for operable parts located in accessible routes. Operable parts include light switches, receptacles, thermostats, alarm pulls, automatic doors, and facility occupants.

Examples of Operable Parts

Compliance is required for the operable portion of fixed elements, such as cabinet hardware, is not for inoperable portions or to non-fixed components, such as the extinguishers.

Provisions for other elements also apply the

**U.S. ACCESS BOARD TECHNICAL GUIDE**  
**Floor and Ground Surfaces**

Specifications for floor and ground surfaces address surface characteristics, covering, openings, and changes in level. They apply to:

- interior and exterior accessible routes, including walking surfaces, ramps, elevators, and lifts
- required clearances, including clear floor space, wheelchair seating spaces, turning space, and door maneuvering clearances
- accessible parking spaces, access aisles, and accessible passenger loading zones

**Firmness, Stability, and Slip Resistance (§302.1)**

Accessible floor and ground surfaces must be stable and firm. Accessible surfaces remain unobstructed.

00:01

# Research



Graphics Key:  
 0-24%  
 Very Bad Design  
 25-49%  
 Poor Design  
 50-74%  
 Fair Design  
 75-100%  
 Good Design

Current ADA-ABA  
 Section: 308.3

Data for some or all  
 participants was not  
 collected for reach  
 ranges below points  
 considered unsafe to  
 attempt reaching.

235 participants	900	800	700	600	500	400	300	200	100	0	-100	mm	horizontal distance
	35.4	31.5	27.6	23.7	19.7	15.8	11.9	7.9	3.9	0	-3.9	in	(from chair edge)
1900-1999 [74.9-78.7]	0	0	0	0	0	0	0	1	1	1	1		
1800-1899 [70.9-74.8]	0	0	0	0	0	1	1	1	1	1	1		
1700-1799 [67.0-70.8]	0	0	0	0	1	1	3	4	4	5	5		
1600-1699 [63.1-66.9]	0	0	0	0	2	5	14	23	27	31	31		
1500-1599 [59.1-63.0]	0	0	0	3	7	17	29	40	50	52	53		
1400-1499 [55.2-59.0]	0	0	2	5	14	26	42	59	66	67	68		
1300-1399 [51.2-55.1]	0	0	3	10	19	36	54	67	70	71	71		
1200-1299 [47.3-51.1]	0	1	5	14	26	45	64	71	72	72	73		
1100-1199 [43.4-47.2]	0	2	7	16	31	53	69	72	72	73	73		
1000-1099 [39.4-43.3]	1	3	9	18	34	56	71	72	73	73	73		
900-999 [35.5-39.3]	1	3	11	21	37	59	70	73	74	74	74		
800-899 [31.6-35.4]	1	3	11	22	40	59	71	73	74	74	74		
700-799 [27.6-31.5]	1	3	11	22	39	57	68	72	73	73	73		
600-699 [23.7-27.5]	1	3	10	20	34	50	62	66	67	67	67		
500-599 [19.7-23.6]	0	3	5	12	20	27	36	41	41	41	41		
400-499 [15.8-19.6]	0	0	0	0	2	4	7	10	10	10	10		
300-399 [11.9-15.7]	0	0	0	0	0	0	0	0	0	0	0		

vertical distar  
 (from floor)





[www.access-board.gov](http://www.access-board.gov)